

# BELLMINI

## SINGLE-GAS DETECTOR



### Features & Benefits



#### Reliable

With high-performance sensor technology and sophisticated signal processing, the BELL MINI single gas detector accurately and reliably detects more than 16 different gases even in extreme environments. The widest LCD provides better readability to gas reading detected in real-time.



#### Durable

With an IP68 waterproof and dustproof rating, the BELL MINI is built to withstand challenging environments. Based on ultra-low-power design, this enables users to use more than 2 years without battery replacement.



#### Easy to handle

User-friendly one-button makes easy and simple to operate. With lightweight, compact and wearable design, it doesn't feel uncomfortable even when used for a long time.



#### IoT Technology

Empowers administrators to access real-time data and easily manage configuration, stored data, firmware updates, calibrations, and bump tests. Ability to connect to the BELL Connect App via BLE(BlueTooth Low Energy).



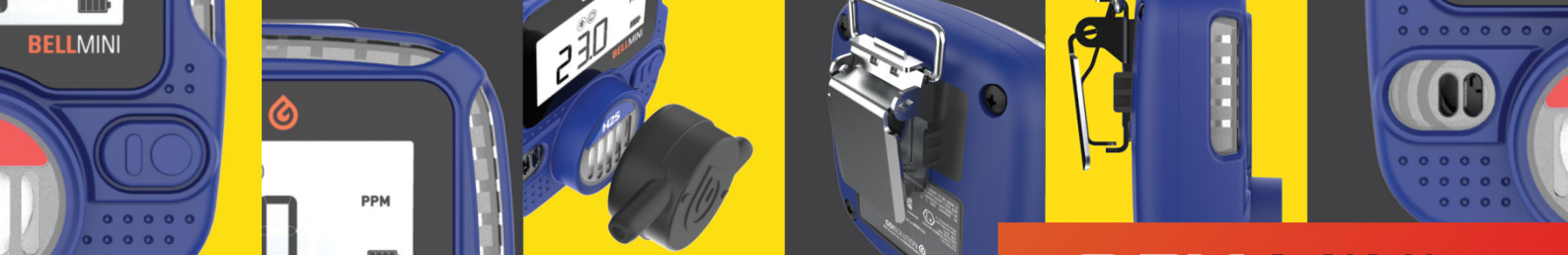
#### Easy to connect

On tagging a smartphone to the detector, the BELL Connect App automatically links. The Built-in NFC technology enables rapid device pairing and eliminates the need for unnecessary connection procedures.



#### Follow-up Service

With a minimum of 200 event logs, managing detector statuses becomes easier. And utilizing replaceable batteries and sensors enables cost-effective usage, as users only need to replace them through our follow-up service.



# BELLMINI

**B e t t e r , E a s y , L o u d , L i g h t**

GDI Solution BELL MINI is a portable single gas detector that protects users' safety by running High-brightness LEDs, Buzzers, and vibrating alarms when exposed to oxygen deficiency or toxic gases.

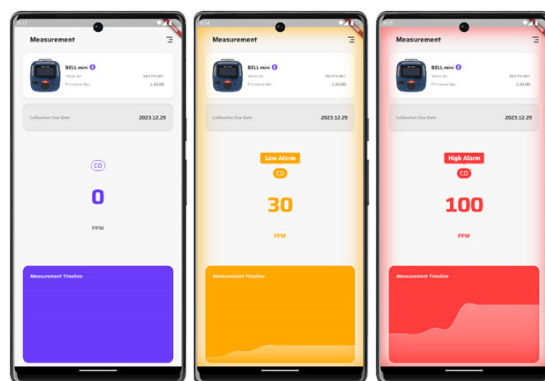
There is an option to select one of 16 gas sensors, including O<sub>2</sub>, CO, H<sub>2</sub>S, H<sub>2</sub>, NH<sub>3</sub>, Cl<sub>2</sub>, SO<sub>2</sub>, and PH<sub>3</sub> sensors. A wider and clearer LCD Display(1.6") shows measured value accurately in real time.

The low-power designed BELL MINI provides over 2 years of operation without battery replacement. And it cost-effectively guarantees durability and reliability.

For the user's or administrator's convenience, the BELL™ Connect App allows them to change its configuration, perform calibration, or handily manage stored data.

The standard built-in NFC and BLE communication make wireless connections between detectors and portable devices quicker and easier.

The measured data is transmitted to the Cloud in real time, and the administrator can monitor the value and check risks in advance by accessing the web.



## BELL Mini Specifications

Size	66x69x24mm(w/o clip) / 66x69x41mm(w clip) 2.59x2.71x0.94in / 2.59x2.71x1.61in
Weight	105g(w/Belt Clip) (3.70 oz)
Humidity	0% to 95% RH (non-condensing)
Display	FSTN LCD display (1.6inch)
IP Rating	IP68
Alarm	Visual Alarm(LEDs), Vibrating Alarm, Audible Alarm (Buzzer; 95dB@30cm): Low, High, TWA, STEL
User Options	Peak, TWA and STEL reset, Adjustable alarm setpoints, Alarm Latching On/Off Adjustment of calibration and bump test interval Zero and gas calibration, Data download, FW update
Self-Test	Breakdown of sensor and circuitry, Battery
Battery	Lithium Battery size 2/3 AA 3.6V: 24months (TBC)
Wireless Connection	Bluetooth Low Energy(BLE) -Bell Connect App or Cloud connection Near Field Communication(NFC) -Easy close-range connection
Data Logging	Up to 200 alarm events, 5,000 data log
Approvals (Pending)	ATEX: Ex II 1G Ex ia IIC T4 Ga KCs: Ex ia IIC T4 IECEX: Ex ia IC T4 Ga NRTL: Class I, Div 1, Groups A, B, C, D, T4
Warranty	2 years (Please refer to the Sensor data)

DUE TO ONGOING RESEARCH AND PRODUCT IMPROVEMENT, SPECIFICATIONS ARE SUBJECT TO CHANGE WITHOUT NOTICE.

## Sensor Specifications

Gas	Measuring Range	Resolution	Temperature
O <sub>2</sub>	0-25%Vol	0.1%Vol	-30°C to 50°C
O <sub>2</sub> lead free	0-25%Vol	0.1%Vol	-40°C to 60°C
CO	0-2000 ppm	1 ppm	-30°C to 50°C
CO-H	0-500 ppm	1 ppm	-30°C to 50°C
H <sub>2</sub> S	0-100 ppm	0.1 ppm	-30°C to 50°C
H <sub>2</sub>	0-1000 ppm	1 ppm	-30°C to 50°C
SO <sub>2</sub>	0-20 ppm	0.1 ppm	-30°C to 50°C
Cl <sub>2</sub>	0-10 ppm	0.1 ppm	-20°C to 50°C
HCl	0-100 ppm	1 ppm	-30°C to 50°C
HCN	0-100 ppm	0.01 ppm	-30°C to 50°C
PH <sub>3</sub>	0-10 ppm	0.1 ppm	-30°C to 50°C
ETO	0-20 ppm	0.1 ppm	-20°C to 50°C
O <sub>3</sub>	0-20 ppm	0.1 ppm	-20°C to 50°C
NO	0-250 ppm	1 ppm	-30°C to 50°C
NO <sub>2</sub>	0-30 ppm	0.1 ppm	-30°C to 50°C
NH <sub>3</sub>	0-1000 ppm	1 ppm	-40°C to 50°C

**GDISOLUTION**

Tel. +82 70-8802-1579 Fax. +82 2-2638-5578

[sales@gdi-solution.com](mailto:sales@gdi-solution.com)

[www.gdi-solution.com](http://www.gdi-solution.com)

Manufactured in Korea

BELL MINI\_08/23  
© 2023 GDI Solution CO., Ltd.